



Claude Monet

French, 1840-1926

*The Thames with
Charing Cross Bridge,
1903*

The Artwork:

*The Thames with Charing
Cross Bridge*

<http://k8charterschool.com/art-title-the-thames-with-charing-cross-bridge/>

The Artist

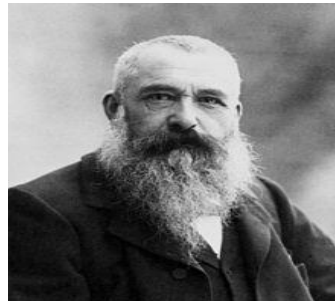
Claude Monet

3rd-4th:

http://www.ducksters.com/biography/artists/claude_monet.php

5th – 8th:

<http://www.biography.com/people/claude-monet-9411771>



Second Industrial Revolution

<http://erenow.com/common/apeurohist/17.html>

<http://www.encyclopedia.com/history/encyclopedias-almanacs-transcripts-and-maps/second-phase-industrial-revolution-1850-1940>

Connecting to Standards

- 3.RN.2.1, 3.RN.2.3, 3.W.3.3, 3.RI.7, 3.1.2
- 5.RN.2.1, 5.RN.2.3, 5.RN.4.2, 5.W.3.2, 5.RI.1, 5.RI.7, 5.3.2
- 8.RV.3.1, 6-8.W.3.2, 6-8.RL2.1, 6-8.RL2.3, 8.RL.4.2, 8.RL.3.2

Writing Prompts

3rd Grade:

Read Monet's biography. Based on the information about Monet and his travels, write a narrative that explains why Monet decided to create *The Thames with Charing Cross Bridge*. Be sure to use information from the text and features from the artwork in your story.

5th Grade:

Read the information about the artwork and the biography of Monet. In what ways did the artist's life influence *The Thames with Charing Cross Bridge*? Write an essay citing examples of how the artist's life is present in his work. Be sure to include information from both articles and features from the artwork in your writing.

8th Grade:

Read all four articles about the artwork, artist, and history. Often artists are influenced by both internal and external factors in their work. Write an argumentative essay on whether or not *The Thames with Charing Cross Bridge* is an accurate representation of the Second Industrial Revolution in an early 20th Century London.